

## Preferred Parts for Industrial Networks

**EMEA**



# Industrial Network Infrastructure

The manufacturing plant floor is undergoing dramatic changes that require businesses to fully utilize industrial Ethernet through the plant floor. A reliable physical infrastructure is the foundation of network performance and critical to keep production running. Panduit's Industrial Network Infrastructure solution is aligned to industry standards for a variety of demanding industrial applications and environments. These replicable turnkey solutions result in reliable network performance across multiple plant locations. This preferred parts list features industrial network infrastructure solutions that are aligned to M.I.C.E environmental guidelines and reference popular configuration drawings that demonstrate typical industrial network designs. For the complete offering, visit [www.panduit.com/industrialnetwork](http://www.panduit.com/industrialnetwork).

## Table of Contents

### Connectivity

Copper Cable .....	3
Copper Connectivity .....	4
Copper Patch Cords .....	5
Fiber .....	5
Accessories .....	6

### Pre-Configured

Pre-Configured Micro Data Center (MDC) .....	7
Industrial Distribution Frames .....	7
Network Zone System .....	7
Network Zone System (Continued) .....	8
Wireless Access Point Enclosures .....	8
Industrial Network Uninterruptible Power Supply (UPS) ....	9
Lock-In and Block-Out Devices .....	9

## Copper Cable



PSW7A04BU-HED



PSMD7004WG-LED



ISFCH6X04BTL-UG



PUFY6X04BU-HED



IFC6C04BBL-CEG



ISFX5502ATL-LED



IUC5C04ABL-CEG

Part Number	Part Description	Min. Order Qty. (MOQ)
<b>Category 7A</b>		
PSW7A04BU-HED	Category 7A, 4-pair, 23 AWG, S/FTP, Blue, Euroclass B2ca-s1a-d1-a1, 500m/1640 ft. Reel.	36 Reel
<b>Category 7</b>		
PSDMA7004WG-LED	Armored, MUD-resistant, 4-pair, 22 AWG stranded, S/FTP, LSZH (IEC 60332-3), SHF2, Window Gray, Euro pallet, 500m/1640 ft. Reel.	20 Reel
PSM7004BU-KEM	4-pair, 23 AWG stranded, S/FTP, LSZH, Blue, Euro pallet, 1000m/3280 ft. Reel.	4 Reel
<b>Category 6A</b>		
ISX6X04ATL-LED	Industrial, 4-pair, 24/7 AWG stranded, S/FTP, PUR, Teal, Euroclass, Eac, 500m/1640 ft. Reel.	12
ISFCH6X04BTL-UG	Industrial, 600V, 4-pair, 26/7 AWG stranded, SF/UTP, CM, Teal, Euroclass, Fca, 305m/1000 ft. Reel.	20000 Feet
PUL6AV04WH-EG	Vari-MaTriX, 4-pair, 23 AWG, U/UTP, LSZH, White, Euroclass Eca, 305m/1000 ft. Reel.	24 Reel
PUL6A04WH-KEG	4-pair, 23 AWG, U/UTP, LSZH (IEC 60332-1), White, Euroclass Eca, 305m/1000 ft. Reel.	18 Reel
PUFY6X04BU-HED	4-pair, 23 AWG, U/FTP, Blue, Euroclass Cca-s1a-d1-a1, 500m/1640 ft. Reel.	36 Reel
<b>Category 6</b>		
ISX6004AYL-LED	Industrial, 4-pair, 24/7 AWG, S/FTP, Yellow, 500m/1640 ft. Reel.	12 Reel
IFRH6C04BL-UG	Industrial, 600V, 4-pair, 23/1 AWG, F/UTP, CMR, Black, Euroclass Fca, 305m/1000 ft. Reel.	20000 Feet
IFC6C04BBL-CEG	Industrial, 4-pair, 26/7 AWG, F/UTP, CM, Black, Euroclass Fca, 305m/1000 ft. Reel.	6 Reel
<b>Category 5e</b>		
ISFCH5C04ATL-XG	Industrial, 4-pair, 24/7 AWG stranded, SF/UTP, CM, Teal, Euroclass Fca, 305m/1000 ft. Reel.	20000 Feet
ISFX5502ATL-LED	Industrial, 2-pair, 24/7 AWG stranded, SF/UTP, PUR, Teal, Euroclass Eca, 500m/1640 ft. Reel.	12 Reel
IFC5C04BBL-CEG	Industrial, 4-pair, 26/7 AWG stranded, F/UTP, CM, Black, Euroclass Fca, 305m/1000 ft. Reel.	6 Reel
ISFX5502ARD-LED	Industrial, 2-pair, 24/7 AWG stranded, SF/UTP, PUR, Red, 500m/1640 ft. Reel.	12 Reel
IFRH5C04BL-UG	Industrial 600V, 4-pair, 24/1 AWG solid, F/UTP, CMR, 305m/1000 ft. Reel.	20000 Feet
IUC5C04ABL-CEG	Industrial, 4-pair, 24/7 AWG stranded, U/UTP, CM, Euroclass Fca, 305m/1000 ft. Reel.	24 Reel

## Copper Connectivity



Part Number	Part Description	Std. Pkg. Qty.	Std. Ctn. Qty.
Category 6A			
IAEBH6XS	IndustrialNet™, Variant 1 Bulkhead Shielded Connector with caps.	1	10
IAEBH6X	IndustrialNet™, Variant 1 Bulkhead UTP Connector with caps.		50
CJSM6X88TG	RJ45, 8-position, 8-wire, Marine Universal Module.		
CJS6X88TGBLY	RJ45, 8-position, 8-wire, Shielded, Universal Module.		
CJ6X88TGBL	RJ45, 8-position, 8-wire, Universal Module.		
CJSH6X88TGY	RJ45, 8-position, 8-wire Shielded Spring Shuttered Mini-Com® Universal Jack Module, Black.		10
ISPS688FA	IndustrialNet™, 8-Position, Shielded, Field Terminable, RJ45 Modular Plug (conductor diameter 1.0 – 1.6mm).		
ISPS688FAS	IndustrialNet™, 8-Position, Shielded, Field Terminable, RJ45 Modular Plug (conductor diameter 0.85 – 1.0mm).		
ISPS6A88MFA	IndustrialNet™, Field Terminable, M12 X-Code Plug.		
IAEBHV56XS	Industrial Variant 5 STP Bulkhead Connector.		
MPSIV56XT	Industrial Variant 5 STP RJ45 Modular Plug.		
Category 6			
IAEBH6S	IndustrialNet™, Variant 1 Bulkhead Shielded Connector with caps	1	10
CJS688TGY	Mini-Com® RJ45, STP 8-position, 8-wire Universal Shielded Module with integral shield. Black.		
Category 5e			
CJS5E88TGY	Mini-Com® RJ45, STP 8-position, 8-wire Universal Shielded Module with integral shield. Black.	1	10
IAEBH5ES	IndustrialNet™, Variant 1 Bulkhead Shielded Connector with caps.		
MPSI588T	24 AWG, Shielded Modular Plug with bulkhead.		
MPI588T	24 AWG, UTP Modular Plug with bulkhead.		
ISPS5E44MFA	IndustrialNet™, M12 D-Code Plug, for use with stranded 26/7-22/7 AWG Category 5e, UTP Copper Cable.		25
Copper Connectivity - USB			
IAEBHUSBAA	IndustrialNet™, Variant 1 Bulkhead USB 2.0 Female A to Female A Coupler.	1	10
IAPCMUSBAABL	Industrial Mini-Com™ USB 2.0 Female A to Female A Coupler.		15
ICAM12DRJS	IndustrialNet™, M12 D-Code Female to RJ45 Jack, Panel Mount Adapter.		
ICAM12XRJS	IndustrialNet™, M12 X-Code Female to RJ45 Jack, Panel Mount Adapter.		
ICAM12X90RJS	IndustrialNet™, M12 X-Code, Female to 90° RJ45 Jack, Panel Mount Adapter.		
Connectivity Accessories			
ISPS688FAS-WM	Category 6A replacement wire managers for RJ45 plug for use with ISPS688FAS.	30	300
ISPS688FA-WM	Category 6A replacement wire managers for RJ45 plug for use with ISPS688FA.		
IAEBHV5C	Industrial Variant 5 bulkhead connector cap.	1	10
MPIV5C	Industrial Variant 5 bulkhead modular plug cap.		



## Copper Patch Cords



ISTP6X3MBL



ISTPSPNC1MBL



ISTPHCH0.3TL

### Fiber



IAEF7JMA



FLCSMCXAQY



FLCDSCBUY



FX2ELLNLNSNM003



FX1BN1NNNSNM001

Part Number	Part Description	Std. Pkg. Qty.	Std. Ctn. Qty.
Category 6A			
ISTPH6X1MTL	IndustrialNet™, Shielded, 600 Volt Rated, Patch cords. Available in Teal or Black, and lengths 0.3M, 0.6M, 1.5M, 2M, 2.5M, 3M, 3.5M, 4M, 4.5M, 5M, 7M, or 10M.	1	10
ISTP6X3MBL	IndustrialNet™, Shielded, Patch Cord with Caps. Additional lengths available, replace 3M with 5M or 10M.		
ISTP6X3MBLR	IndustrialNet™, Shielded, Patch Cord Hybrid with Cap. Additional lengths available, replace 3M with 5M or 10M.		
UTP28X0.2MBU	28AWG, UTP CM/LSZH patch cord with modular plugs on each end, available in Blue (BU), or International Gray (IG). Additional lengths available, replace 0.2M with 0.5M, 1M, 2M, 3M, or 5M.		
STP6X0.5MIG	Shielded Patch Cord with Pan-Plug® Shielded Modular Plugs on each end. Additional lengths available, replace 0.5M with 1M, 1.5M, 2.5M, 15M, 20M, 25M, 30M, 35M, 40M.		
Category 6			
ISTPSP1MBL	IndustrialNet™, Shielded, Stranded Patch Cord with Caps.	1	10
ISTPSPNC1MBL	IndustrialNet™, Stranded Patch Cord.		
Additional lengths available. Replace 1M with 2M, 3M, 5M, or 10M.			
Category 5e			
ISTPCH1MBLY	IndustrialNet™, Shielded, Stranded Patch Cord with Caps. Additional lengths available, replace 1M with 2M, 3M, 5M or 10M.	1	10
ISTPCHNC1MBLY	IndustrialNet™, Shielded, Stranded Patch Cord. Additional lengths available, replace 1M with 2M, 3M, 5M or 10M.		
ISTPHCH0.3TL	IndustrialNet™, Shielded, 600V, Patch Cord. Additional lengths available, replace 0.3 with 0.6, 1M, 2M, 3M, or 5M.		
STPCH1MBSL	Shielded, Stranded Patch Cord. Additional lengths available, replace with 1M with 0.5M, 1.5M, 2.5M, 15M, 20M, 25M, 30M, 35M, 40M.		
Fiber Connectivity			
IAEF7JMA	IndustrialNet™ LC Duplex Fiber Optic Bulkhead Adapter.	1	10
CMSAQSCBL	Module supplied with one SC OM3/OM4 simplex multimode fiber optic adapter, Aqua, with phosphor bronze split sleeve.		
CMSBUSCZBU	Module supplied with one SC simplex singlemode fiber optic adapter (BU) with zirconia ceramic split sleeve.		
CMDSLCZBU	Duplex LC fiber adapter (BU) with module (BU) zirconia ceramic split sleeve.		
FLCSMCXAQY	LC OptiCam® OM3/OM4 50/125µm Multimode Simplex Connector, Aqua, for 900µm tight-buffered fiber installation.		
FLCSSCBUY	LC OptiCam® OS2 Singlemode Simplex Connector, Blue, for 900 micron tight-buffered fiber installation.		
FLCDMCXAQY	LC OptiCam® OM3/OM4 10Gig™ 50/125µm Multimode Duplex Connector, Aqua, for 900µm tight-buffered fiber installations, pre-polished fiber endface.		
FLCDSCBUY	LC OptiCam® OS2 Singlemode Duplex, pre-polished connector, Blue, with zirconia ceramic ferrules, for 900µm tight-buffered fiber installations.		
Fiber Patch Cords and Pigtails			
IAEF617P-7PM2	Industrial LC to LC multimode duplex patch cord – 62.5/125µm, 2 meter.	1	10
IAEF617P-NM1	Industrial LC to pigtail multimode duplex pigtail – 62.5/125µm, 1 meter.		
FX2ELLNLNSNM003	OM3, 2 fiber, 16mm jacket patch cord, low smoke zero halogen (LSZH) rated, LC duplex to LC duplex, Std. IL, 2 meters.		
FX23LSNSNSNM001	OM3, 2 fiber, SC duplex to SC duplex patch cord, 3mm jacket, low smoke zero halogen (LSZH) rated, Std. IL.		
FX1BN3NNNSNM002	OM3, 1 fiber, SC to pigtail, 900µm buffered fiber, patch cord, no jacket, (one SC connector on one end and open on the other end) Std. IL, Aqua, 1 meter.		
FX1BN1NNNSNM001	OM3, 1 fiber, 900µm buffered fiber, LC to pigtail multimode simplex pigtail, (one LC connector on one end and open on the other end) 1 meter.		
FADC504-37	OM2, 4 fiber indoor distribution, low smoke zero halogen (LSZH) rated.		

Additional lengths available, please visit [panduit.com](http://panduit.com).

## Accessories



FOCTT2-PKIT



FDME8RG



CDPP8RG

Part Number	Part Description	Std. Pkg. Qty.	Std. Ctn. Qty.
FOCTT2-PKIT	OptiCam® Termination Tool 2 Termination Premium Kit, includes batteries, case, launch cords, one cradle for each LC, SC2 and ST2 connector, Sumitomo Cleaver, installation tools, cleaning and consumables.	1	—
<b>IndustrialNet™ DIN Rail Mount Fiber Enclosure</b>			
FDME8RG	IndustrialNet™, 8-port, DIN Rail Fiber Optic Enclosure.	1	10
<b>Mini-Com® DIN Rail Mount Adapter</b>			
CADIN1IG	1-port, DIN rail mount adapter with label.	1	10
<b>IndustrialNet™ DIN Rail Mount Copper Patch Panel</b>			
CDPP8RG	IndustrialNet™ 8-port DIN Rail Mount Copper Patch Panel, RG.	1	10

## Pre-Configured Micro Data Center (MDC)



**MDC79**



**MDC82NL**

Part Number	Part Description	Std. Pkg. Qty.	Std. Ctn. Qty.
<b>MDC79</b>	9 Single hinge perforated front door, split perforated rear doors, split side panels (2), 42 RU, network cabling, patch panels, cable management, grounding and casters. Black. Dimensions: 79.8" H x 27.6" W x 48.0" D (2026mm x 700mm x 1200mm).	1	—
<b>MDC79D</b>	Dynamic, single hinge perforated front door, split perforated rear doors, split side panels (2), 42 RU, network cabling, patch panels, cable management, grounding, casters, shock pallet and ramp. Black. Dimensions: 79.8" H x 27.6" W x 48.0" D (2026mm x 700mm x 1200mm).		
<b>MDC82NL</b>	NEMA Type 12, IP55, single hinge front door with windowed glass, single hinge rear door, solid side panel (1), side panel with cutout for 20k BTU AC (1), 42 RU, network cabling, patch panels, cable management, grounding, and casters. Light Gray. Dimensions: 78.7" H x 27.6" W x 47.2" D (2000mm x 700mm x 1200mm).		

For other side panel configurations, please visit [panduit.com](http://panduit.com)

## Industrial Distribution Frames



**ZDF48-EA**

Part Number	Part Description	Std. Pkg. Qty.	Std. Ctn. Qty.
<b>ZDF242430</b>	Pre-configured industrial distribution frame enclosure, 12U, ready for two access or two distribution switches.	1	—
<b>ZDF242430-6</b>	Pre-configured industrial distribution frame enclosure, 12U, 316 stainless steel, ready for two access or two distribution switches.		
<b>ZDF48-EA</b>	Pre-configured industrial distribution frame enclosure ready for two access and two distribution switches.		
<b>ZDF48-6EA</b>	Pre-configured industrial distribution frame enclosure, 316 stainless steel, ready for two access and two distribution switches.		

## Network Zone System



**Z23C-SS**

Part Number	Part Description	Downlink Port Connectivity	Std. Pkg. Qty.	Std. Ctn. Qty.
24" x 36" Universal Network Zone; for Two Industrial Switches				
Z23U-S24S	Includes (16) Category 6A STP copper patch cords and jacks, (4) MM LC fiber uplink patch cords with (6) adaptors and redundant power supplies.	Category 6A STP	1	—
Z23U-S25S	Includes (16) Category 6A STP copper patch cords and jacks, (4) MM LC fiber uplink patch cords with (6) adaptors, redundant power supplies and (2) maintenance-free UPS.			
Z23C-SS	Includes (16) Category 6A STP copper patch cords, (4) MM LC fiber patch cords with (6) adaptors, backplane and cable management.			
Z23C-S	Includes (16) Category 6 UTP copper patch cords and jacks, (4) MM LC fiber patch cords with (6) adaptors, backplane and cable management.	Category 6 UTP		
Z23U-S24	Includes (16) Category 6 UTP copper patch cords and jacks, (4) MM LC fiber uplink patch cords with (6) adaptors and redundant power supplies.			
Z23U-S25	Includes (16) Category 6 UTP copper patch cords and jacks, (4) MM LC fiber uplink patch cords with (6) adaptors, redundant power supplies and (2) maintenance-free UPS.			

## Network Zone System (Continued)

Part Number	Part Description	Downlink Port Connectivity	Std. Pkg. Qty.	Std. Ctn. Qty.
24" x 24" Universal Network Zone; for One Industrial Switch				
Z22U-S14S	Includes (8) Category 6A STP copper patch cords and jacks, (2) MM LC fiber uplink patch cords with (6) adaptors and redundant power supplies.	Category 6A STP	1	—
Z22U-S15S	Includes (8) Category 6A STP copper patch cords and jacks, (2) MM LC fiber uplink patch cords with (6) adaptors, redundant power supplies and maintenance-free UPS.			
Z22U-S14	Includes (8) Category 6 UTP copper patch cords and jacks, (2) MM LC fiber uplink patch cords with (6) adaptors and redundant power supplies.	Category 6 UTP		
Z22U-S15	Includes (8) Category 6 UTP copper patch cords and jacks, (2) MM LC fiber uplink patch cords with (6) adaptors, redundant power supplies and maintenance-free UPS.			



**Z23C-S**

### 24" x 36" Pre-Configured Network Zone; for Two Industrial Switches

<b>Z23C-SS</b>	Pre-configured network zone system, 610mm x 914mm (24" x 36") steel enclosure, for two industrial switches, includes (16) Category 6A STP copper patch cords, (4) MM LC fiber patch cords with (6) adaptors, backplane and cable management.	Category 6A STP	1	—
<b>Z23C-S</b>	Pre-configured network zone system, 610mm x 914mm (24" x 36") steel enclosure, for two industrial switches, includes (16) Category 6 UTP copper patch cords and jacks, (4) MM LC fiber patch cords with (6) adaptors, backplane and cable management.	Category 6 UTP		

### 24" x 24" Pre-Configured Network Zone; for Two Industrial Switches

<b>Z22C-SS</b>	Pre-configured network zone system, 610mm x 610mm (24" x 24") enclosure, for two industrial switches, includes (8) Category 6A STP copper patch cords and jacks, (2) MM LC fiber patch cords with (6) LC adaptors, backplane and cable management.	Category 6A STP	1	—
<b>Z22C-S</b>	Pre-configured network zone system, 610mm x 610mm (24" x 24") steel enclosure, for two industrial switches, includes (8) Category 6 UTP copper patch cords and jacks, (2) MM LC fiber patch cords with (6) LC adaptors, backplane and cable management.	Category 6 UTP		

Enclosures available in mild steel, stainless steel or sloped versions.



**PZNDVK**



**PZNF3**

Part Number	Part Description	Std. Pkg. Qty.	Std. Ctn. Qty.
<b>Enclosure Accessories</b>			
<b>PZNDVK</b>	Zone cabling drain and vent kit, NEMA 4X rating.	1	10
<b>PZNF1</b>	Zone cabling compression fitting, NEMA 6P cable diameter 2.92mm – 6.4mm (0.115-0.250").		
<b>PZNF2</b>	Zone cabling compression fitting, NEMA 6P cable diameter 6.4mm – 10mm (0.230-0.395").		
<b>PZNF3</b>	Zone cabling compression fitting, NEMA 6P cable diameter 4.3mm – 11.4mm (0.170-0.450").		

### Wireless Access Point Enclosures

<b>PZNWE12S</b>	Wireless enclosure designed for Power over Ethernet applications. Includes shielded connectivity kit. External dimensions: 344.4mm H x 342.1mm W x 166.6mm D. Internal dimensions: 297.2mm H x 297.2mm W x 159.8mm D.	1	—
<b>PZNWE14S</b>	Wireless enclosure designed for traditional AC power applications. Includes shielded connectivity kit. External dimensions: 393.7mm H x 342.9mm W x 158.8mm D. Internal dimensions: 343.7mm H x 293.4mm W x 150.9mm D.		



**PZNWE12S**



## Industrial Network Uninterruptible Power Supply (UPS)



UPS00100DC

Part Number	Part Description	Std. Pkg. Qty.	Std. Ctn. Qty.
UPS00100DC	100W; no-battery, maintenance-free with remote management; 24-28 VDC in/out. DIN rail mount.	1	—
UPS003LSM	UPS load sense module; optional accessory for use in dual, redundant power supply configurations to monitor load on primary supply.		

## Lock-In and Block-Out Devices



PSL-LCAB

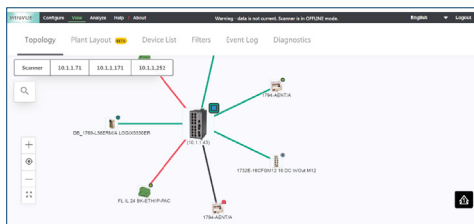


FLCCIW-X

Part Number	Part Description	Std. Pkg. Qty.	Std. Ctn. Qty.
Block-Out			
PSL-DCJB	RJ45 jack module block-out device, 10 devices, Red. One removal tool, Black, polycarbonate.	1	—
PSL-LCAB	LC duplex adapter block-out device, 10 devices, Red. One installation/removal tool, Black, polycarbonate.		
Lock-In			
PSL-DCPLX-BL	RJ45 plug lock-in device, 10 devices, Black. One installation/removal tool, Black, polycarbonate.	1	—
FLCCLIW-X	Lock-In connector allows connectors to be locked into or released from adapters in modules, FAPs, cassettes, or patch panels for enhanced physical security. Includes LC duplex lock-in clip and one removal tool.	10	—

## IntraVUE™ Industrial Ethernet Visualization and Monitoring Software

IntraVUE™ Software automatically detects Ethernet-connected devices and assembles them into a connection tree map of the physical layer network infrastructure, providing visibility into all levels of devices on a manufacturing floor. This software tool enables quick and efficient identification to network communication problems and provides a comprehensive, accurate view of an entire Ethernet device architecture for non-technical users. IntraVUE™ Software empowers maintenance and/or controls engineers to shift from a reactive to proactive approach to greatly improve both the uptime and performance of critical, real-time networked automation systems.



Nodes	Standard Product Number	Advanced Product Number
128	SNMS-0128	SNMA-0128
256	SNMS-0256	SNMA-0256
512	SNMS-0512	SNMA-0512
1,204	SNMS-1024	SNMA-1024
2,048	SNMS-2048	SNMA-2048
4,096	SNMS-4096	SNMA-4096
8,192	SNMS-8192	SNMA-8192

Product #WNMS-APPL is an optional Linux-based IntraVUE™ Appliance Package that contains only hardware.



**PANDUIT™**

Panduit CBC London  
6 Broad Street Place  
London  
EC2M 7JH  
UK

phone +44 (0) 208 601 7200

[EMEA-CustomerServices@panduit.com](mailto:EMEA-CustomerServices@panduit.com)

[www.panduit.com](http://www.panduit.com)