

**STULZ**

CLIMATE. CUSTOMIZED.



# AirBooster 2

More efficient cooling of server racks thanks to airflow management  
for targeted cooling of hot spots

# STULZ air conditioning systems for mission-critical applications – around the globe



**For 40 years** we have been one of the world's leading manufacturers of air conditioning solutions for mission-critical applications. For our customers, we develop and produce air conditioning systems and chillers, plan individual air conditioning solutions, implement the systems and keep them up and running with our own service department.

Our headquarters are in Hamburg. With 21 subsidiaries, 10 production sites, and sales and service partners in over 140 countries, we make sure we are close to our customers wherever they are in the world.



## Technical peak performance from Germany

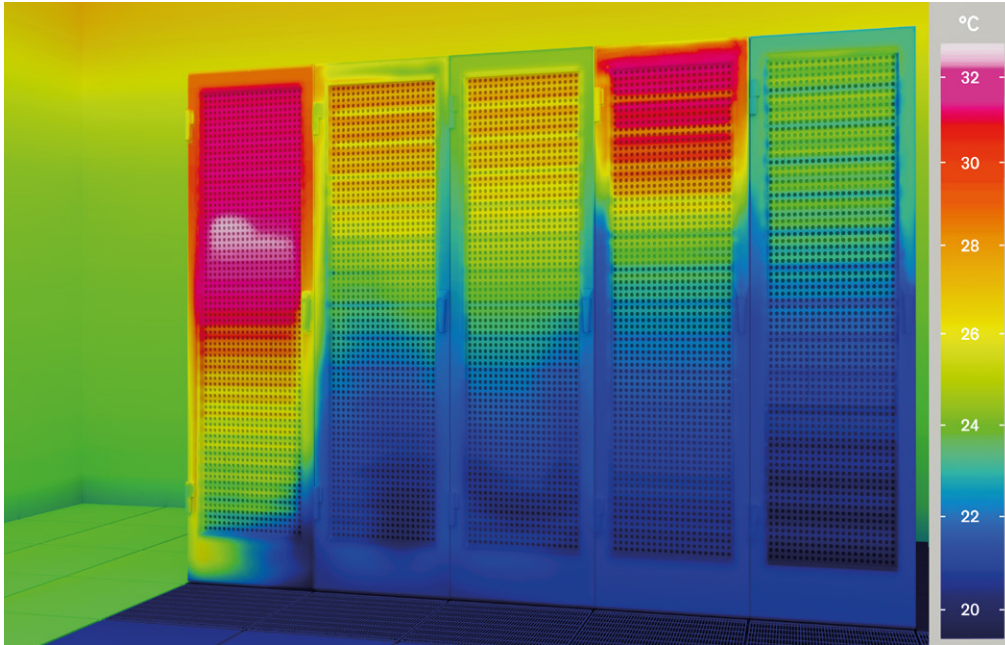
It is the combination of decades of experience and a continuous innovative spirit that makes STULZ unique. From engineers to customer advisers, we collaborate in close-knit teams to develop and continually optimize our air conditioning and chilled water systems throughout all stages of development. So it should come as no surprise that our systems are extremely reliable and durable, setting the benchmark for energy efficiency around the globe.



## High quality service worldwide close to you

Our trained and experienced sales and service partners are located in over 140 countries. The resulting proximity to our customers allows fast response times. In addition, regular training courses and an active exchange of information ensure high quality and an extensive knowledge of all our products. This way, you can be sure your products are in the best hands and get the right maintenance - all over the world.

# Airflow management for data centers



A thermographic image renders hot and cold zones in the data center visible. This is how you can recognize critical zones in your server racks.

Server racks deployed in a data center feature different heat loads according to the application. In this era of server virtualization and cloud technologies, changing utilization is a matter that has to be addressed.

It results in the over or undersupply of cold air to your servers, which can lead to increased operating costs or even overheating with subsequent server failure.

If you operate a data center with traditional closed-circuit air conditioning and want to cool your servers based on need, STULZ has the ideal airflow management solution for you.

In just a few simple steps, the AirBooster 2 units from STULZ can be installed in the existing raised floor directly in front of the server rack, where they immediately ensure optimum air conduction and hot spot prevention.

## + Benefits at a glance

- Control based on cooling needs for an efficient and reliable air supply
- Easy installation, operational in minimal time
- UL and CE compliant
- Can be connected to BMS systems
- Grills available in two designs for individual requirements
- Perfect fit for standard raised floor systems with grid size 600 mm x 600 mm
- Low height allows installation under the raised floor (400 mm)
- Service available worldwide

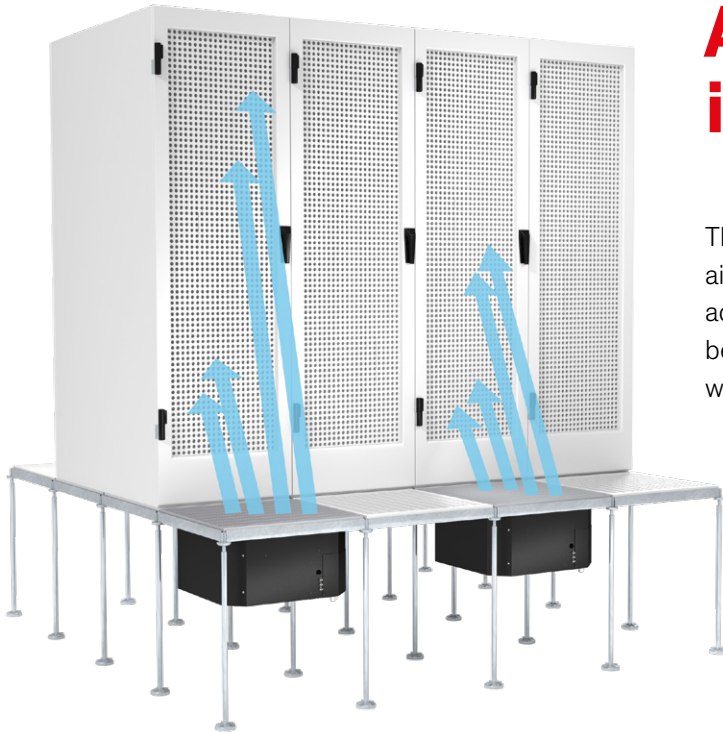


# AirBooster 2 – For targeted cooling of hot spots

Do you want cooling precisely targeted at hot spots in your data center? The AirBooster 2's manually adjustable air conduction fins are designed to provide just this kind of pinpoint accuracy. The fins are precisely positioned to target locations that require increased cooling. This way, a concentrated flow of air acts on hot spots. The result is ideal supply air conditions without complicated and expensive installations and enclosures.



- 1** Microcontroller
- 2** EC fan
- 3** Adjustable air conduction fins



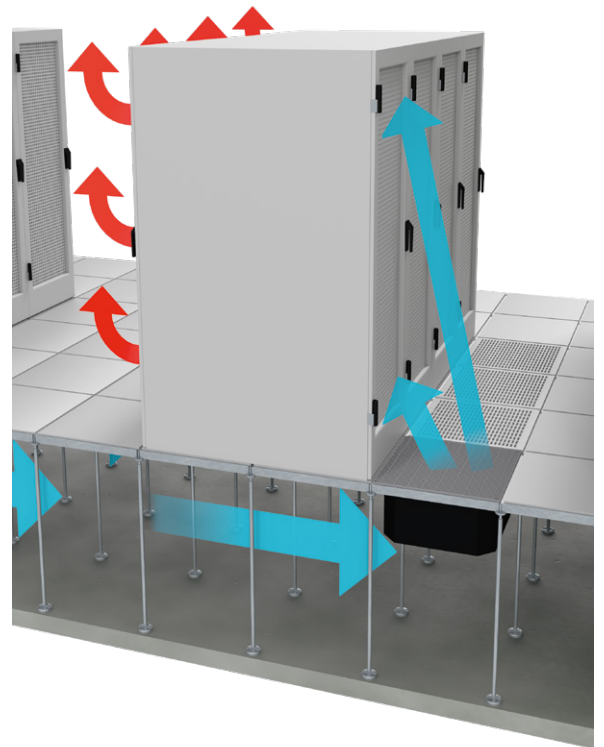
## Air conduction in two zones

The air stream from the AirBooster 2 units can be aimed at two zones per server rack. The manually adjustable air conduction fins allow the airflow to be directed to the most heat-stressed areas, in line with server load.

The units are fitted with a variable-speed EC fan, a controller and several temperature sensors. These sensors, which are affixed to the server at different heights, measure the temperature of the air at the server inlet. The controller regulates the fan speed based on the measured temperature values and a configurable setpoint. If the server inlet temperature rises, the fan speed is increased to guarantee sufficient cooling of servers.

### + Benefits at a glance

- High precision cooling of hot spots in server racks
- Easy installation, operational in minimal time
- Adjustable air conduction fins for targeted air conduction in two zones
- EC fan for pinpoint accuracy of airflow supply
- Airflow of up to 4,360 m<sup>3</sup>/h
- Temperature measurement by three sensors
- Optional pressure control
- Low power consumption in rated operation
- No enclosure required



# Optimum operating conditions thanks to smart control

## For units with integrated control

- User-friendly interface and display
- RS485 interface for BMS
- RTU Modbus protocol
- Connection terminals for remote control On/Off
- Auxiliary contact for general alarm signals
- Three temperature sensors
- Unit of measurement on temperature display: °C or °F
- Illuminated On/Off switch
- LED status light

## Grills in two designs

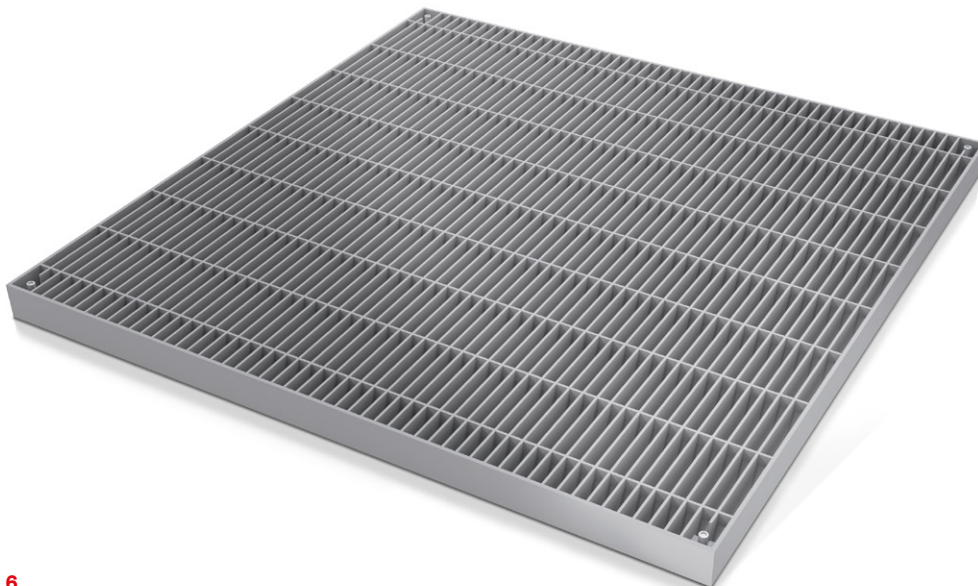
Airflow management units are supplied with either a light-duty or a heavy-duty grill, depending on requirements.

### Light-duty grill for optimum air conduction

- Flow-optimized grill for small pressure drops
- BS EN 13264:2001 classification
  - Distributed load 33 kN/m<sup>2</sup>
  - Point load 1.5 kN over 25 mm × 25 mm surface area
- Dimensions (width x length x depth):  
598 mm x 598 mm x 20 mm
- Can be adjusted to various raised floor grill thicknesses:  
23–44 mm
- Color: RAL 7047

### Heavy-duty grill for protection against mechanical stress

- Available as an option
- Protects the units against loads relating to lift trucks
- BS EN 13264:2001 classification
- Point load 4.5 kN over 25 mm × 25 mm surface area
- Dimensions (width x length x depth):  
598 mm × 598 mm × 30 mm
- Can be adjusted to various raised floor grill thicknesses:  
33–44 mm
- Color: RAL 7047



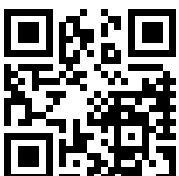
# Technical data

		Airflow 2,900 m <sup>3</sup> /h	Airflow 4,360 m <sup>3</sup> /h
<b>Dimensions</b>			
Width, length	mm	598 × 598	598 × 598
Depth	mm	260 + Gitterrost	260 + Gitterrost
<b>Power consumption</b>			
	W	75	474
<b>Cooling capacity</b>			
Delta T <sup>1</sup> 10 K	kW	10	15
Delta T <sup>1</sup> 15 K	kW	15	22
Delta T <sup>1</sup> 20 K	kW	19	29

## Bemerkung:

<sup>1</sup> Delta T: Difference in air temperature between the server inlet and server outlet

For additional information on Delta T,  
please scan the QR code or visit our website at  
[www.stulz.de/url/1E03q](http://www.stulz.de/url/1E03q)



## STULZ Company Headquarters

### STULZ GmbH

Holsteiner Chaussee 283  
22457 Hamburg  
Tel. +49 40 5585-0  
products@stulz.de

## STULZ Subsidiaries

GERMANY  
AUSTRALIA  
AUSTRIA  
BELGIUM  
BRAZIL  
CHINA  
FRANCE  
INDIA  
INDONESIA  
IRELAND  
ITALY  
MEXICO  
NETHERLANDS  
NEW ZEALAND  
POLAND  
SINGAPORE  
SOUTH AFRICA  
SPAIN  
SWEDEN  
UNITED KINGDOM  
USA

### STULZ Australia Pty. Ltd.

34 Bearing Road  
Seven Hills NSW 2147  
Tel. +61 (2) 96744700  
sales@stulz.com.au

### STULZ Austria GmbH

Industriezentrum NÖ – SÜD,  
Straße 15, Objekt 77, Stg. 4, Top 7  
2355 Wiener Neudorf  
Tel. +43 1 615 99 81-0  
info@stulz.at

### STULZ Belgium BVBA

Tervurenlaan 34  
1040 Brussels  
Tel. +32(470)292020  
info@stulz.be

### STULZ Brasil

**Ar Condicionado Ltda.**  
Rua Canconeiro de Évora, 140  
Bairro - Santo Amaro São  
Paulo-SP, CEP 04708-010  
Tel. +55 11 4163 4989  
comercial@stulzbrasil.com.br

### STULZ Air Technology and Services Shanghai Co., Ltd.

Room 406, Building 5  
457 North Shanxi Road  
Shanghai 200040  
Tel: + 86 21 3360 7101  
info@stulz.cn

### STULZ France S. A. R. L.

107, Chemin de Ronde  
78290 Croissy-sur-Seine  
Tel. +33(1)34804770  
info@stulz.fr

### STULZ-CHSPL (India) Pvt. Ltd.

006, Jagruti Industrial Estate  
Mogul Lane, Mahim  
Mumbai - 400016  
Tel. +91 (22)56669446  
info@stulz.in

### PT STULZ Air Technology Indonesia

Kebayoran Square blok KQ unit A-01  
Jalan Boulevard Bintaro Jaya,  
Bintaro Sektor 7,  
Tangerang Selatan 15229  
Tel. +62 21 2221 3982  
info@stulz.id

### STULZ IRELAND LTD.

Unit 15  
Park West Road  
Park West  
Dublin 12  
info@stulz.ie

### STULZ S.p.A.

Via Torricelli, 3  
37067 Valeggio sul Mincio (VR)  
Tel. +39(045)633 1600  
info@stulz.it

### STULZ México S.A. de C.V.

Avda. Santa Fe No. 170  
Oficina 2-2-08, German Centre  
Delegación Alvaro Obregon  
MX- 01210 México  
Distrito Federal  
Tel. +52(55)52928596  
ventas@stulz.com.mx

### STULZ GROEP B. V.

Postbus 75  
180 AB Amstelveen  
Tel. +31(20)5451 111  
stulz@stulz.nl

### STULZ New Zealand Ltd.

Unit O, 20 Cain Road  
Penrose, Auckland 1061  
Tel. +64(9)3603232  
sales@stulz.co.nz

### STULZ Polska SP. Z O.O.

Budynek Mistral.  
Al. Jerozolimskie 162  
02 – 342 Warszawa  
Tel. +48(22)8833080  
info@stulz.pl

### STULZ Singapore Pte Ltd.

1 Harvey Road  
#04-00 Tan Heng Lee Building  
Singapore 369610  
Tel. +65 6749 2738  
sales@stulz.sg

### STULZ South Africa Pty. Ltd.

Unit 3, Jan Smuts Business Park  
Jet Park, Boksburg  
Gauteng, South Africa  
Tel. +27(0)113972363  
aftersales@stulz.co.za

### STULZ España S.A.

Calle Carabaña, 25C  
28925 Alcorcón (Madrid)  
Tel. +34(91)5178320  
info@stulz.es

### STULZ Sverige AB

Västertorpsvägen 135  
129 44 Hägersten  
Stockholm, Sweden  
Tel. +46 8 12157550  
info@stulzverige.se

### STULZ U. K. Ltd.

First Quarter,  
Blenheim Rd. Epsom  
Surrey KT 19 9 QN  
Tel. +44(1372)749666  
sales@stulz.co.uk

### STULZ AIR TECHNOLOGY SYSTEMS (STULZ USA), INC.

1572 Tilco Drive  
Frederick, MD 21704  
Tel. +1(301)6202033  
info@stulz-ats.com

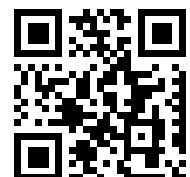
Technical data subject to change without notice. 1100609 V1.0 02-19 en · © STULZ GmbH, Hamburg

## Close to you around the world

With specialist, competent partners in ten German branches and in subsidiaries and exclusive sales and service agents around the world.

Our ten production sites are situated in Europe, North America and Asia.

For further information, please visit our website at [www.stulz.com](http://www.stulz.com)



You can find out more  
on our website.